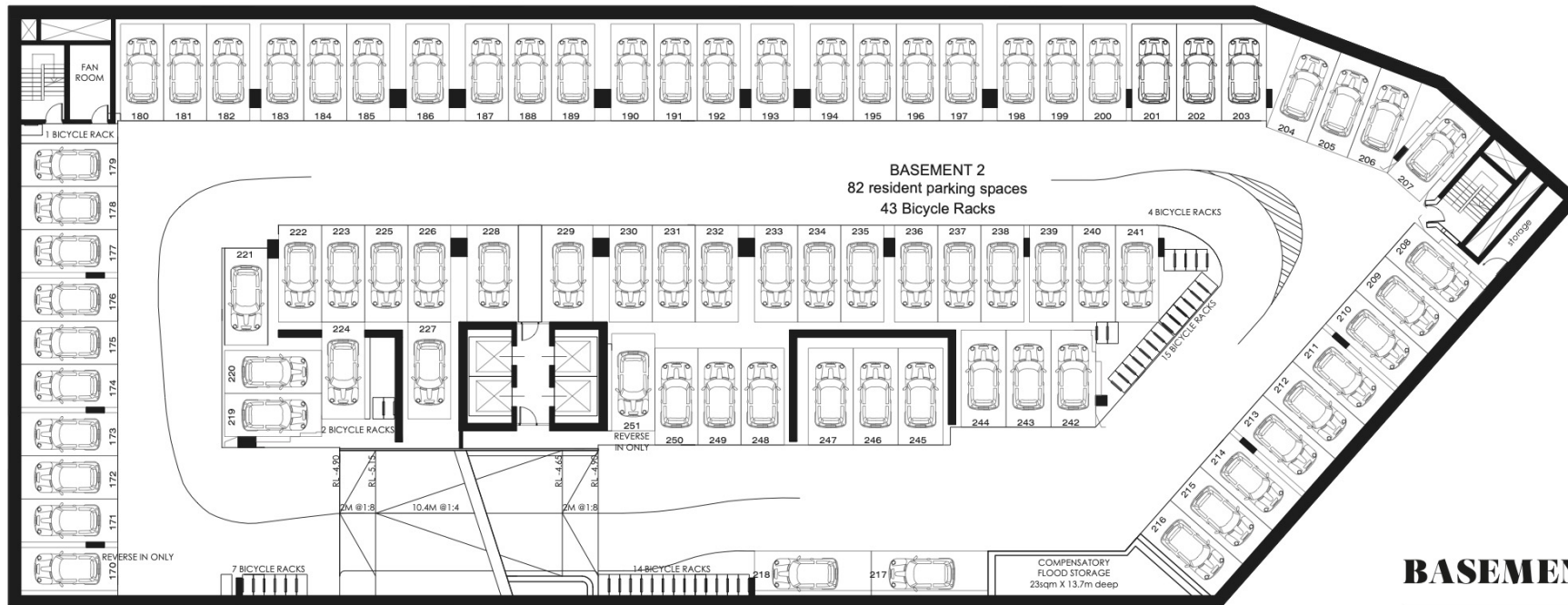




CHEVRON ONE

GOLD COAST



BASEMENT LEVEL 2

BROUGHT TO YOU BY

Bensons

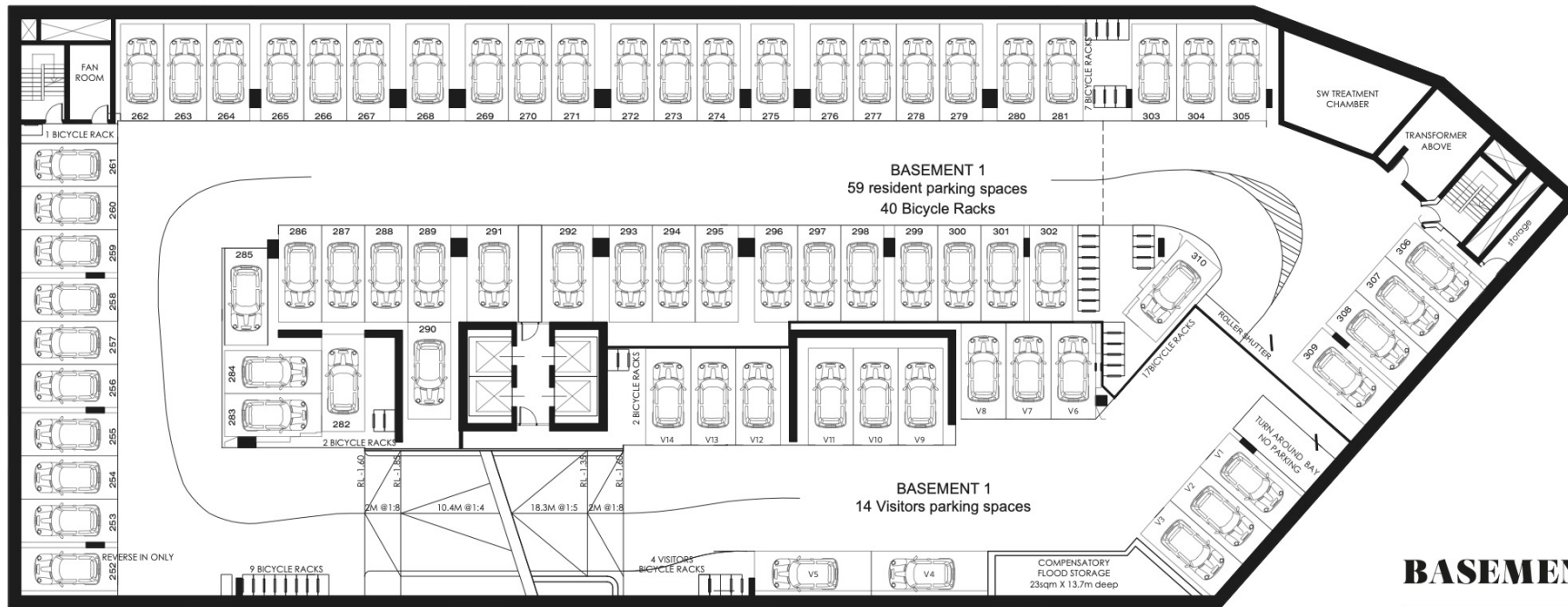
DISCLAIMER This plan and any areas shown are subject to the terms of the contract of sale and are subject to amendment and dimensional change. All dimensions are approximate, areas indicated are determined in accordance with the Land Title Act of Queensland (1994) method of measurement guidelines for measuring floor space in residential premises. Fittings, finishes, fixtures and specifications are also subject to change without notice. Images of furniture are for illustrative purposes only. Furniture is not included in the sale. Views will vary depending on the position of the lot within building. Each of the developer, builder and agent do not warrant that views will not be impacted by future development.





CHEVRON ONE

GOLD COAST

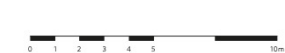


BASEMENT LEVEL 1

BROUGHT TO YOU BY

Bensons

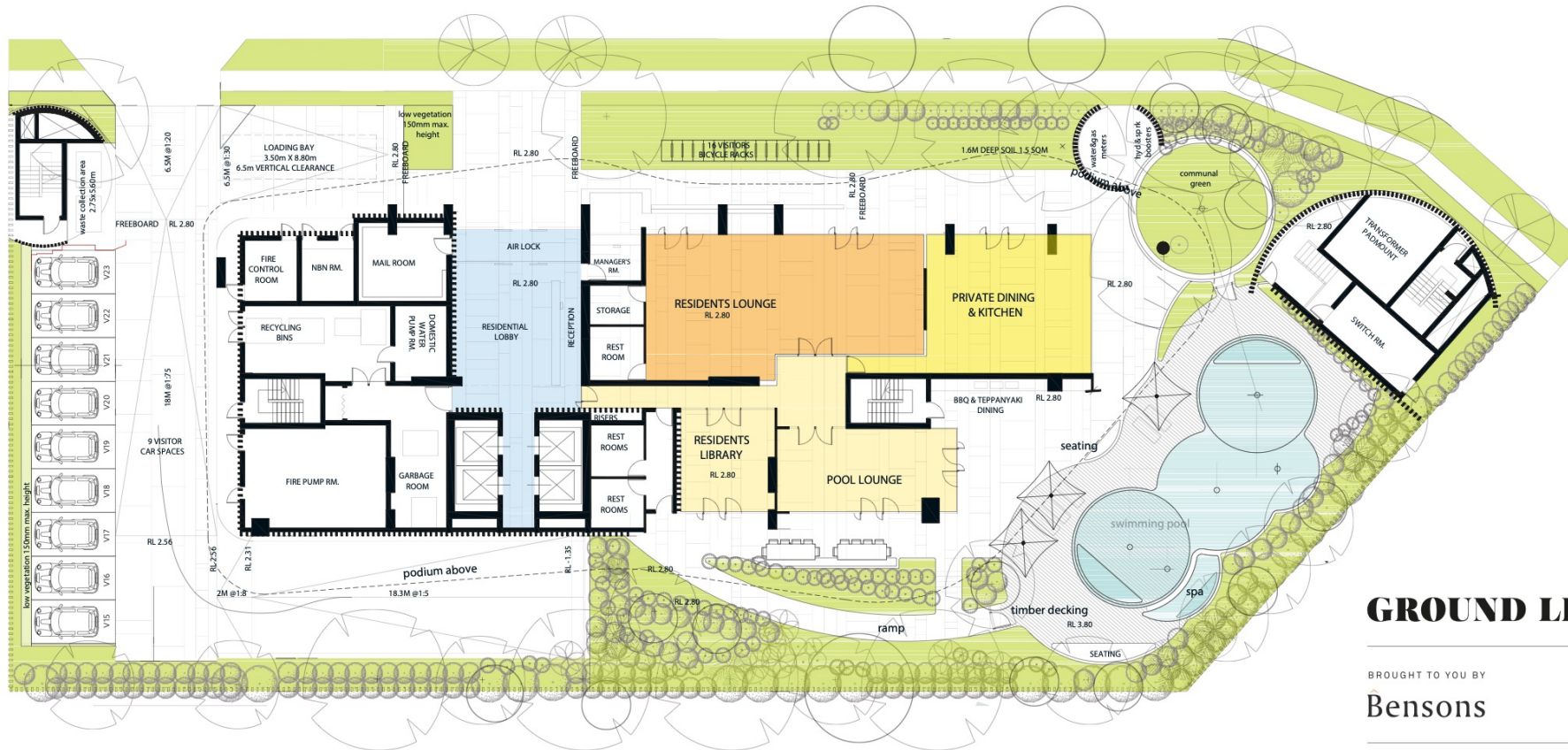
DISCLAIMER This plan and any areas shown are subject to the terms of the contract of sale and are subject to amendment and dimensional change. All dimensions are approximate, areas indicated are determined in accordance with the Land Title Act of Queensland (1994) method of measurement guidelines for measuring floor space in residential premises. Fittings, finishes, fixtures and specifications are also subject to change without notice. Images of furniture are for illustrative purposes only. Furniture is not included in the sale. Views will vary depending on the position of the lot within building. Each of the developer, builder and agent do not warrant that views will not be impacted by future development.





CHEVRON ONE

GOLD COAST



GROUND LEVEL

BROUGHT TO YOU BY

Bensons

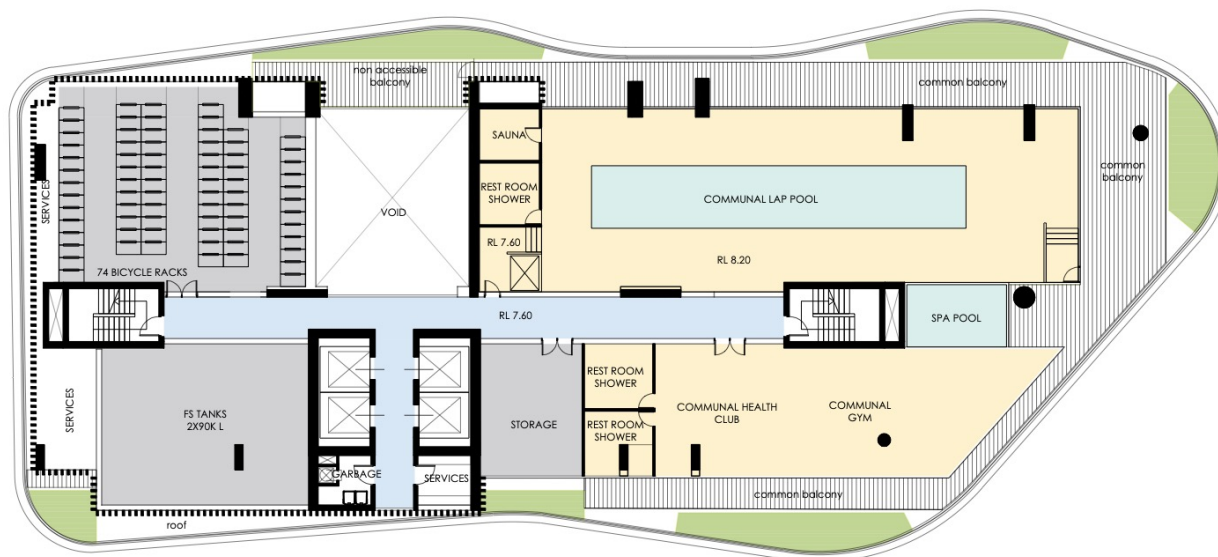
DISCLAIMER This plan and any areas shown are subject to the terms of the contract of sale and are subject to amendment and dimensional change. All dimensions are approximate, areas indicated are determined in accordance with the Land Title Act of Queensland (1994) method of measurement guidelines for measuring floor space in residential premises. Fittings, finishes, fixtures and specifications are also subject to change without notice. Images of furniture are for illustrative purposes only. Furniture is not included in the sale. Views will vary depending on the position of the lot within building. Each of the developer, builder and agent do not warrant that views will not be impacted by future development.





CHEVRON ONE

GOLD COAST



LEVEL 1

BROUGHT TO YOU BY

Bensons

DISCLAIMER This plan and any areas shown are subject to the terms of the contract of sale and are subject to amendment and dimensional change. All dimensions are approximate, areas indicated are determined in accordance with the Land Title Act of Queensland (1994) method of measurement guidelines for measuring floor space in residential premises. Fittings, finishes, fixtures and specifications are also subject to change without notice. Images of furniture are for illustrative purposes only. Furniture is not included in the sale. Views will vary depending on the position of the lot within building. Each of the developer, builder and agent do not warrant that views will not be impacted by future development.





CHEVRON ONE

GOLD COAST

APARTMENT 2.02

Type A
INTERNAL 92m²
BALCONY 37m²

APARTMENT 2.03

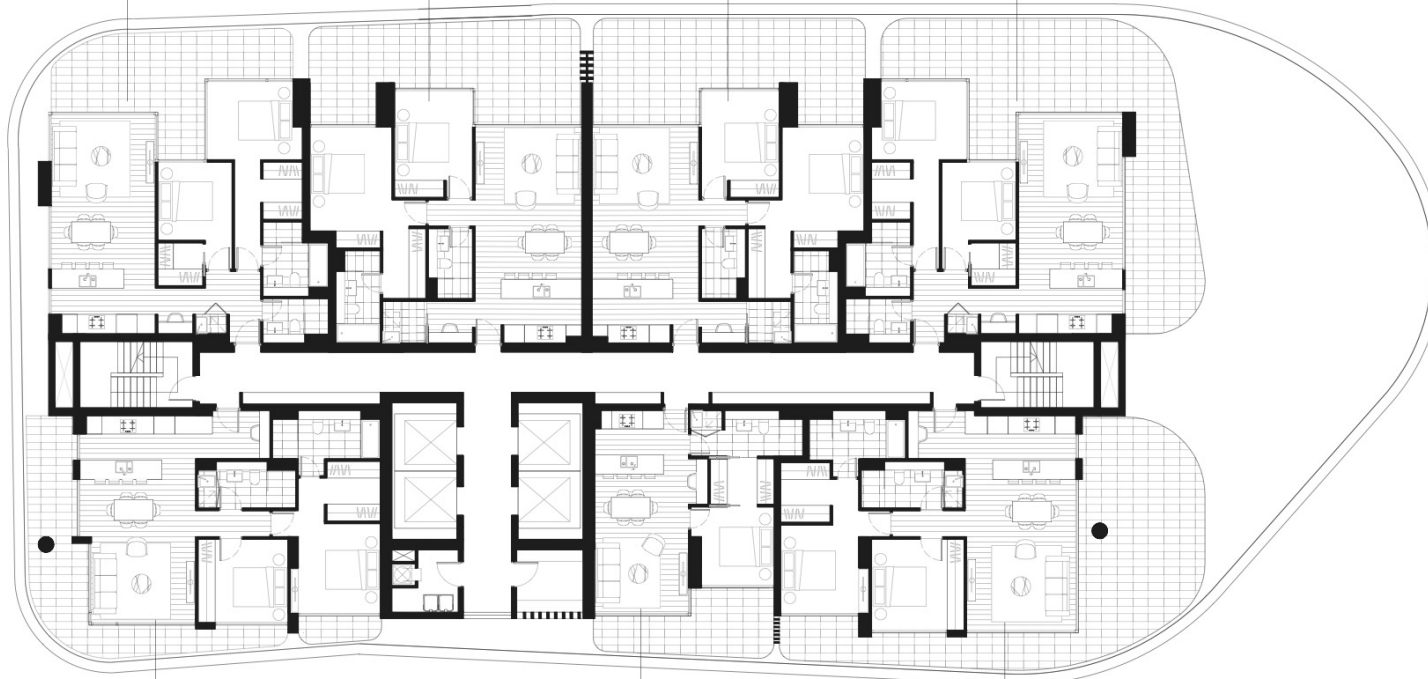
Type B
INTERNAL 92m²
BALCONY 41m²

APARTMENT 2.04

Type B (Mirrored)
INTERNAL 92m²
BALCONY 38m²

APARTMENT 2.05

Type A (Mirrored)
INTERNAL 92m²
BALCONY 62m²



APARTMENT 2.01

Type C
INTERNAL 93m²
BALCONY 29m²

APARTMENT 2.07

Type D
INTERNAL 60m²
BALCONY 17m²

APARTMENT 2.06

Type E
INTERNAL 95m²
BALCONY 58m²

LEVEL 2

BROUGHT TO YOU BY

 **Bensons**

DISCLAIMER This plan and any areas shown are subject to the terms of the contract of sale and are subject to amendment and dimensional change. All dimensions are approximate, areas indicated are determined in accordance with the Land Title Act of Queensland (1994) method of measurement guidelines for measuring floor space in residential premises. Fittings, finishes, fixtures and specifications are also subject to change without notice. Images of furniture are for illustrative purposes only. Furniture is not included in the sale. Views will vary depending on the position of the lot within building. Each of the developer, builder and agent do not warrant that views will not be impacted by future development.

0 1 2 3 4 5 10m





CHEVRON ONE

GOLD COAST

APARTMENT 3.02 - 8.02

Type A

INTERNAL 92m²

BALCONY 37m²

APARTMENT 3.03 - 8.03

Type B

INTERNAL 92m²

BALCONY 26m²

APARTMENT 3.04 - 8.04

Type B (Mirrored)

INTERNAL 92m²

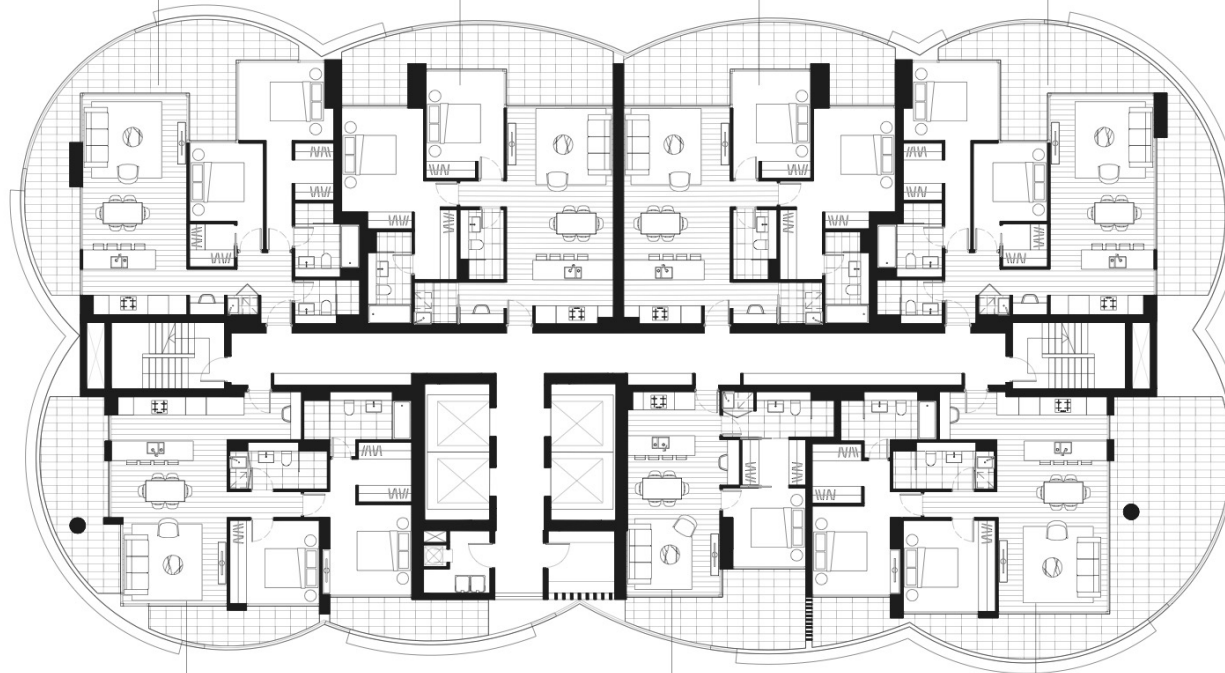
BALCONY 26m²

APARTMENT 3.05 - 8.05

Type A (Mirrored)

INTERNAL 92m²

BALCONY 39m²



APARTMENT 3.01 - 8.01

Type C

INTERNAL 93m²

BALCONY 38m²

APARTMENT 3.07 - 8.07

Type D

INTERNAL 60m²

BALCONY 17m²

APARTMENT 3.06 - 8.06

Type E

INTERNAL 95m²

BALCONY 53m²

LEVEL 3 - 8

BROUGHT TO YOU BY

Bensons

DISCLAIMER This plan and any areas shown are subject to the terms of the contract of sale and are subject to amendment and dimensional change. All dimensions are approximate, areas indicated are determined in accordance with the Land Title Act of Queensland (1994) method of measurement guidelines for measuring floor space in residential premises. Fittings, finishes, fixtures and specifications are also subject to change without notice. Images of furniture are for illustrative purposes only. Furniture is not included in the sale. Views will vary depending on the position of the lot within building. Each of the developer, builder and agent do not warrant that views will not be impacted by future development.

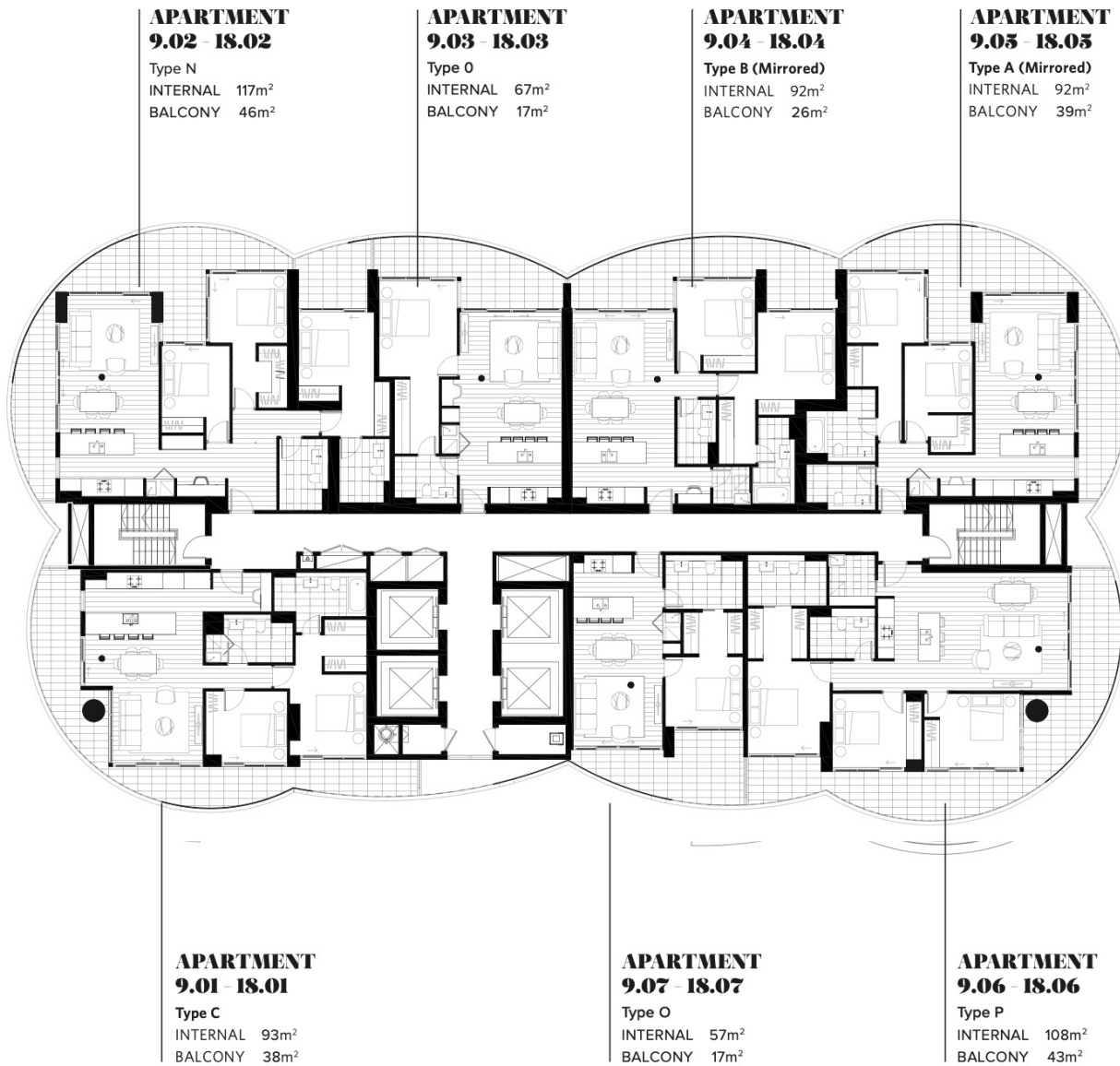
0 1 2 3 4 5 10m





CHEVRON ONE

GOLD COAST



LEVEL 9-18

BROUGHT TO YOU BY

Bensons

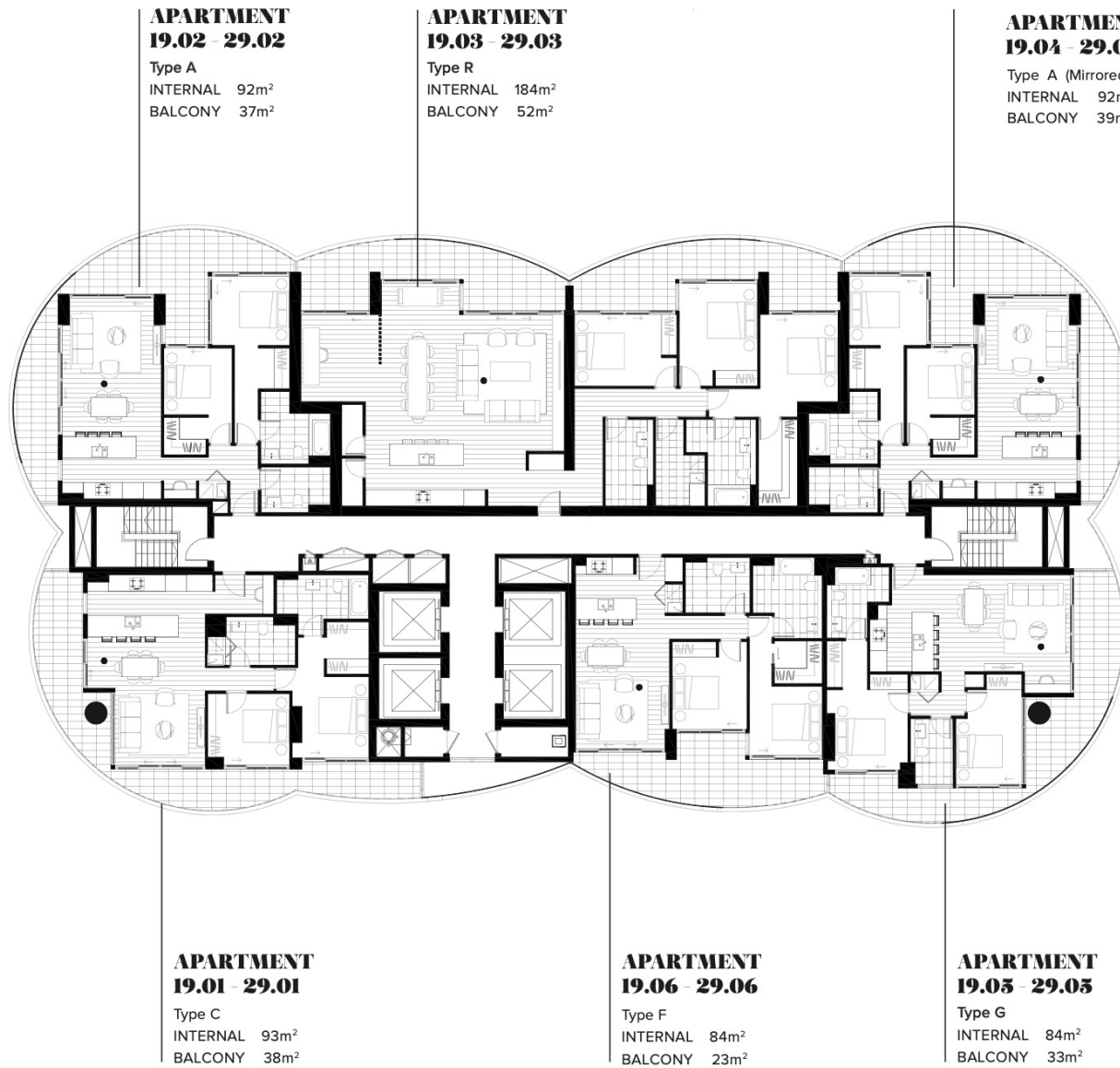
DISCLAIMER This plan and any areas shown are subject to the terms of the contract of sale and are subject to amendment and dimensional change. All dimensions are approximate, areas indicated are determined in accordance with the Land Title Act of Queensland (1994) method of measurement guidelines for measuring floor space in residential premises. Fittings, finishes, fixtures and specifications are also subject to change without notice. Images of furniture are for illustrative purposes only. Furniture is not included in the sale. Views will vary depending on the position of the lot within building. Each of the developer, builder and agent do not warrant that views will not be impacted by future development.





CHEVRON ONE

GOLD COAST



LEVEL 19 - 29

BROUGHT TO YOU BY

Bensons

DISCLAIMER This plan and any areas shown are subject to the terms of the contract of sale and are subject to amendment and dimensional change. All dimensions are approximate, areas indicated are determined in accordance with the Land Title Act of Queensland (1994) method of measurement guidelines for measuring floor space in residential premises. Fittings, finishes, fixtures and specifications are also subject to change without notice. Images of furniture are for illustrative purposes only. Furniture is not included in the sale. Views will vary depending on the position of the lot within building. Each of the developer, builder and agent do not warrant that views will not be impacted by future development.





CHEVRON ONE

GOLD COAST

APARTMENT 30.02 - 36.02

Type H

INTERNAL 125m²

BALCONY 57m²

APARTMENT 30.03 - 36.03

Type I

INTERNAL 105m²

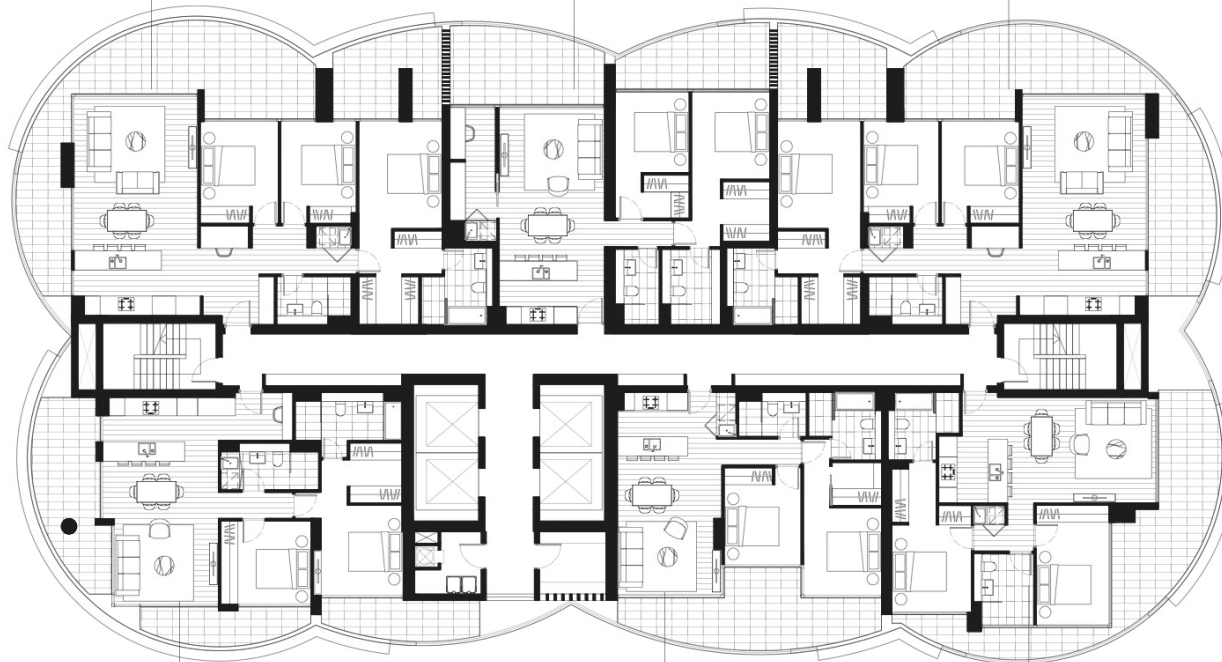
BALCONY 25m²

APARTMENT 30.04 - 36.04

Type H (Mirrored)

INTERNAL 125m²

BALCONY 60m²



APARTMENT 30.01 - 36.01

Type C

INTERNAL 93m²

BALCONY 38m²

APARTMENT 30.06 - 36.06

Type F

INTERNAL 84m²

BALCONY 23m²

APARTMENT 30.05 - 36.05

Type G

INTERNAL 84m²

BALCONY 34m²

LEVEL 30 - 36

BROUGHT TO YOU BY

Bensons

DISCLAIMER This plan and any areas shown are subject to the terms of the contract of sale and are subject to amendment and dimensional change. All dimensions are approximate, areas indicated are determined in accordance with the Land Title Act of Queensland (1994) method of measurement guidelines for measuring floor space in residential premises. Fittings, finishes, fixtures and specifications are also subject to change without notice. Images of furniture are for illustrative purposes only. Furniture is not included in the sale. Views will vary depending on the position of the lot within building. Each of the developer, builder and agent do not warrant that views will not be impacted by future development.

0 1 2 3 4 5 10m





CHEVRON ONE

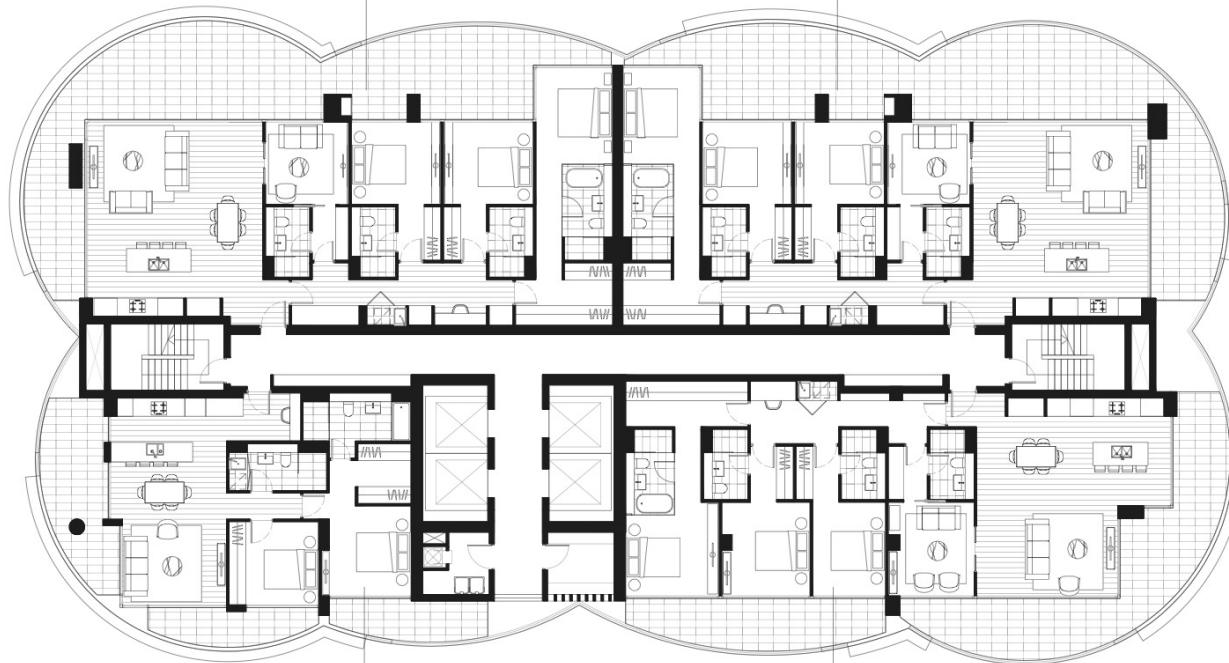
GOLD COAST

APARTMENT 37.02

Type J
INTERNAL 171m²
BALCONY 78m²

APARTMENT 37.03

Type J (Mirrored)
INTERNAL 171m²
BALCONY 80m²



APARTMENT 37.01

Type C
INTERNAL 93m²
BALCONY 38m²

APARTMENT 37.04

Type K
INTERNAL 164m²
BALCONY 61m²

LEVEL 37

BROUGHT TO YOU BY

Bensons

DISCLAIMER This plan and any areas shown are subject to the terms of the contract of sale and are subject to amendment and dimensional change. All dimensions are approximate, areas indicated are determined in accordance with the Land Title Act of Queensland (1994) method of measurement guidelines for measuring floor space in residential premises. Fittings, finishes, fixtures and specifications are also subject to change without notice. Images of furniture are for illustrative purposes only. Furniture is not included in the sale. Views will vary depending on the position of the lot within building. Each of the developer, builder and agent do not warrant that views will not be impacted by future development.

0 1 2 3 4 5 10m





CHEVRON ONE

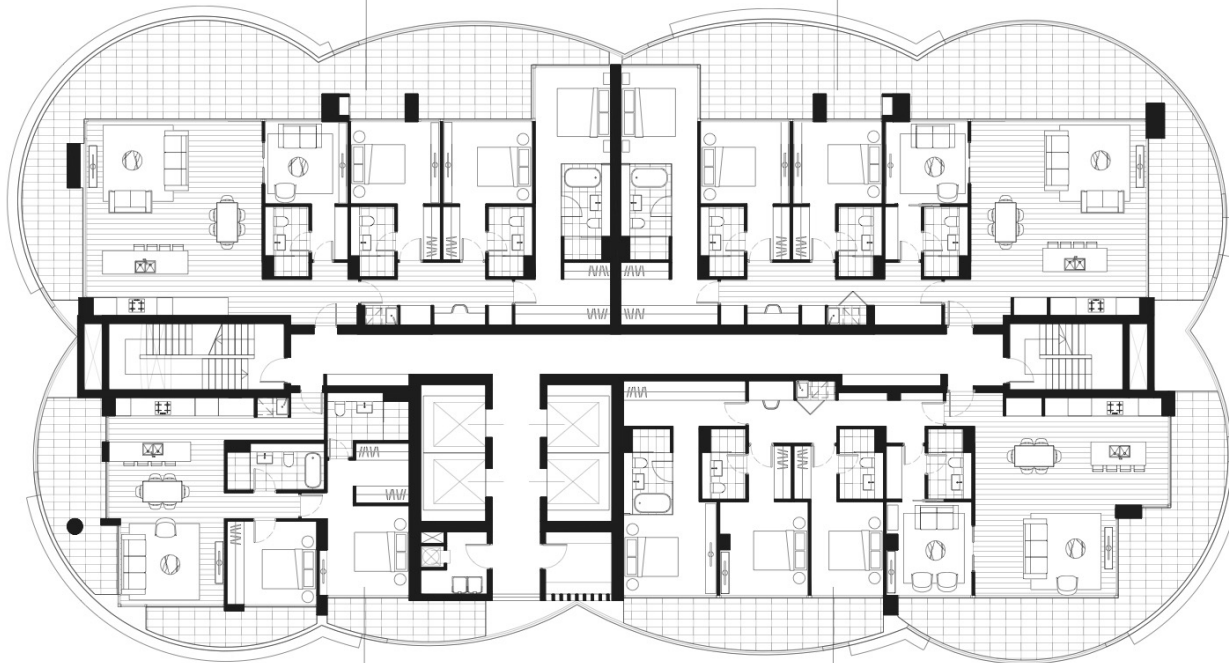
GOLD COAST

APARTMENT 38.02

Type M
INTERNAL 170m²
BALCONY 78m²

APARTMENT 38.03

Type J (Mirrored)
INTERNAL 171m²
BALCONY 80m²



APARTMENT 38.01

Type L
INTERNAL 95m²
BALCONY 38m²

APARTMENT 38.04

Type K
INTERNAL 164m²
BALCONY 61m²

LEVEL 38

BROUGHT TO YOU BY

Bensons

DISCLAIMER This plan and any areas shown are subject to the terms of the contract of sale and are subject to amendment and dimensional change. All dimensions are approximate, areas indicated are determined in accordance with the Land Title Act of Queensland (1994) method of measurement guidelines for measuring floor space in residential premises. Fittings, finishes, fixtures and specifications are also subject to change without notice. Images of furniture are for illustrative purposes only. Furniture is not included in the sale. Views will vary depending on the position of the lot within building. Each of the developer, builder and agent do not warrant that views will not be impacted by future development.

0 1 2 3 4 5 10m





CHEVRON ONE

GOLD COAST

APARTMENT 39.01

INTERNAL 530m²

BALCONY 383m²



LEVEL 39

BROUGHT TO YOU BY

Bensons

DISCLAIMER This plan and any areas shown are subject to the terms of the contract of sale and are subject to amendment and dimensional change. All dimensions are approximate, areas indicated are determined in accordance with the Land Title Act of Queensland (1994) method of measurement guidelines for measuring floor space in residential premises. Fittings, finishes, fixtures and specifications are also subject to change without notice. Images of furniture are for illustrative purposes only. Furniture is not included in the sale. Views will vary depending on the position of the lot within building. Each of the developer, builder and agent do not warrant that views will not be impacted by future development.

0 1 2 3 4 5 10m





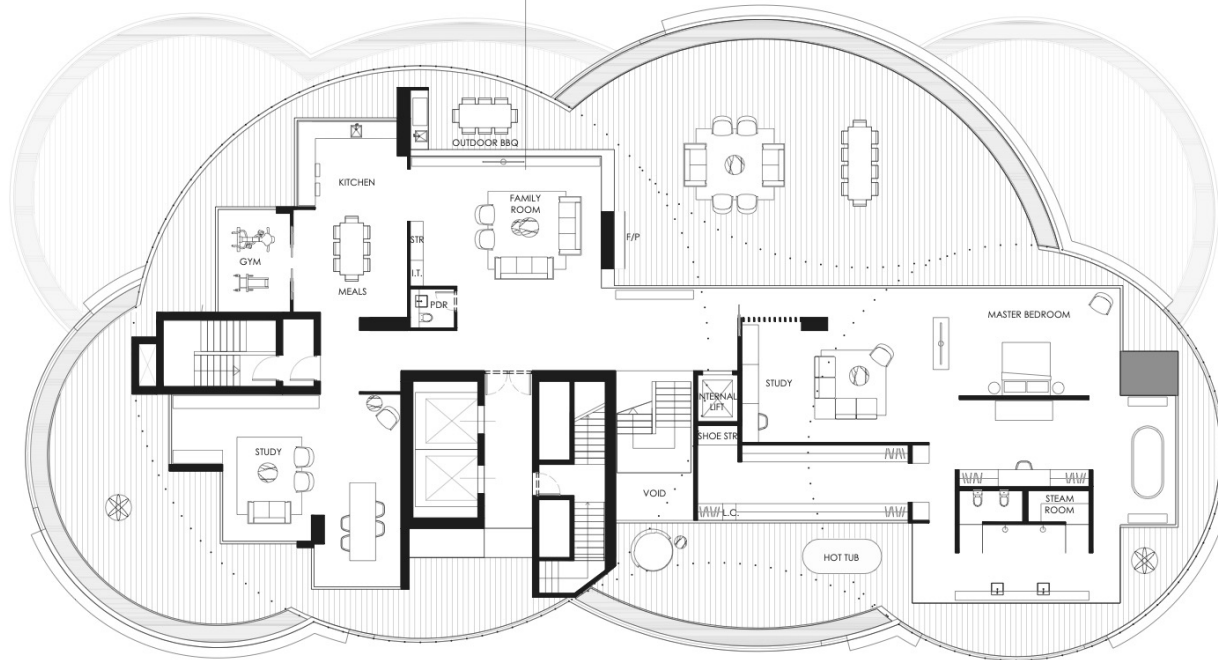
CHEVRON ONE

GOLD COAST

APARTMENT 39.01

INTERNAL 390m²

BALCONY 370m²



LEVEL 40

BROUGHT TO YOU BY

Bensons

DISCLAIMER This plan and any areas shown are subject to the terms of the contract of sale and are subject to amendment and dimensional change. All dimensions are approximate, areas indicated are determined in accordance with the Land Title Act of Queensland (1994) method of measurement guidelines for measuring floor space in residential premises. Fittings, finishes, fixtures and specifications are also subject to change without notice. Images of furniture are for illustrative purposes only. Furniture is not included in the sale. Views will vary depending on the position of the lot within building. Each of the developer, builder and agent do not warrant that views will not be impacted by future development.

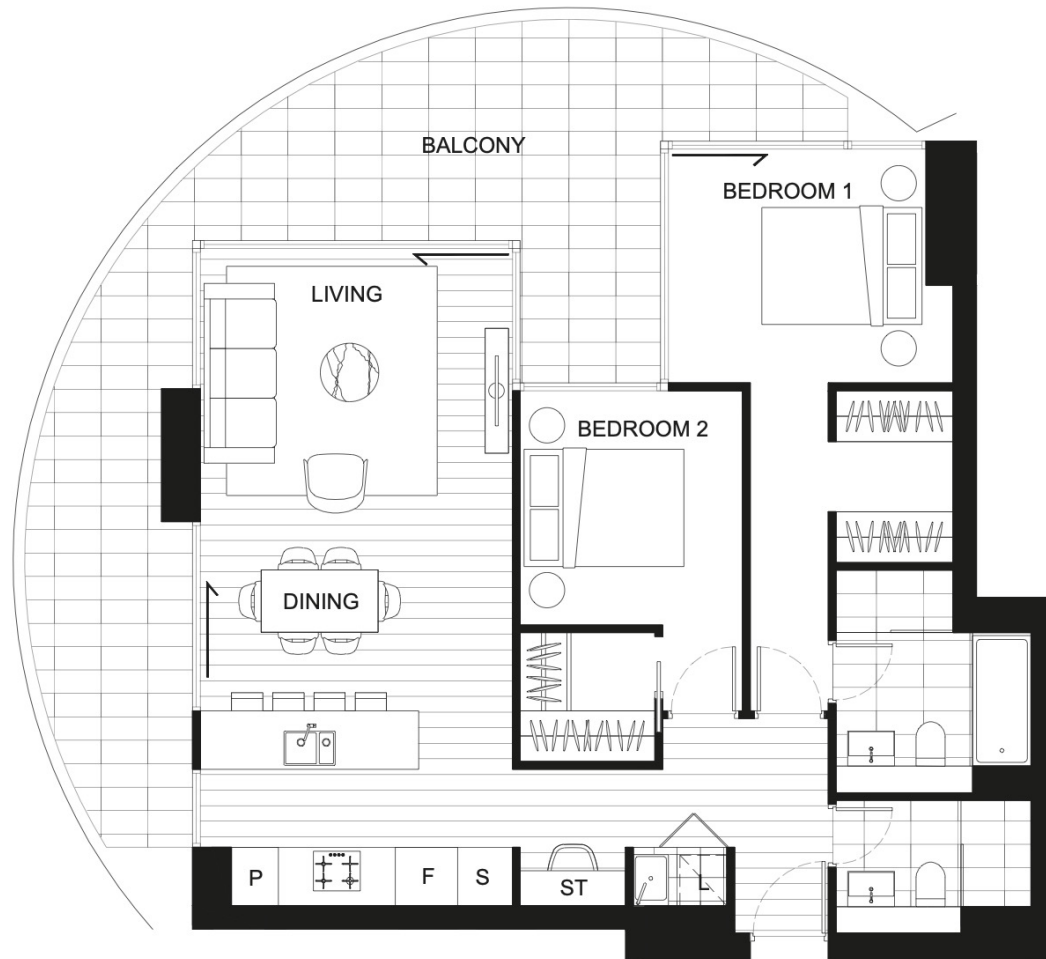
0 1 2 3 4 5 10m





CHEVRON ONE

GOLD COAST



TYPE A



2 BEDROOM
1 STUDY

INTERNAL	92m ²
EXTERNAL	(L2) 43m ² / (L3-29) 37m ²
TOTAL	(L2) 135m ² / (L3-29) 129m ²

APARTMENTS

2.02, 3.02, 4.02, 5.02, 6.02, 7.02, 8.02, 19.02, 20.02,
21.02, 22.02, 23.02, 24.02, 25.02, 26.02, 27.02, 28.02,
29.02

BROUGHT TO YOU BY

Bensons

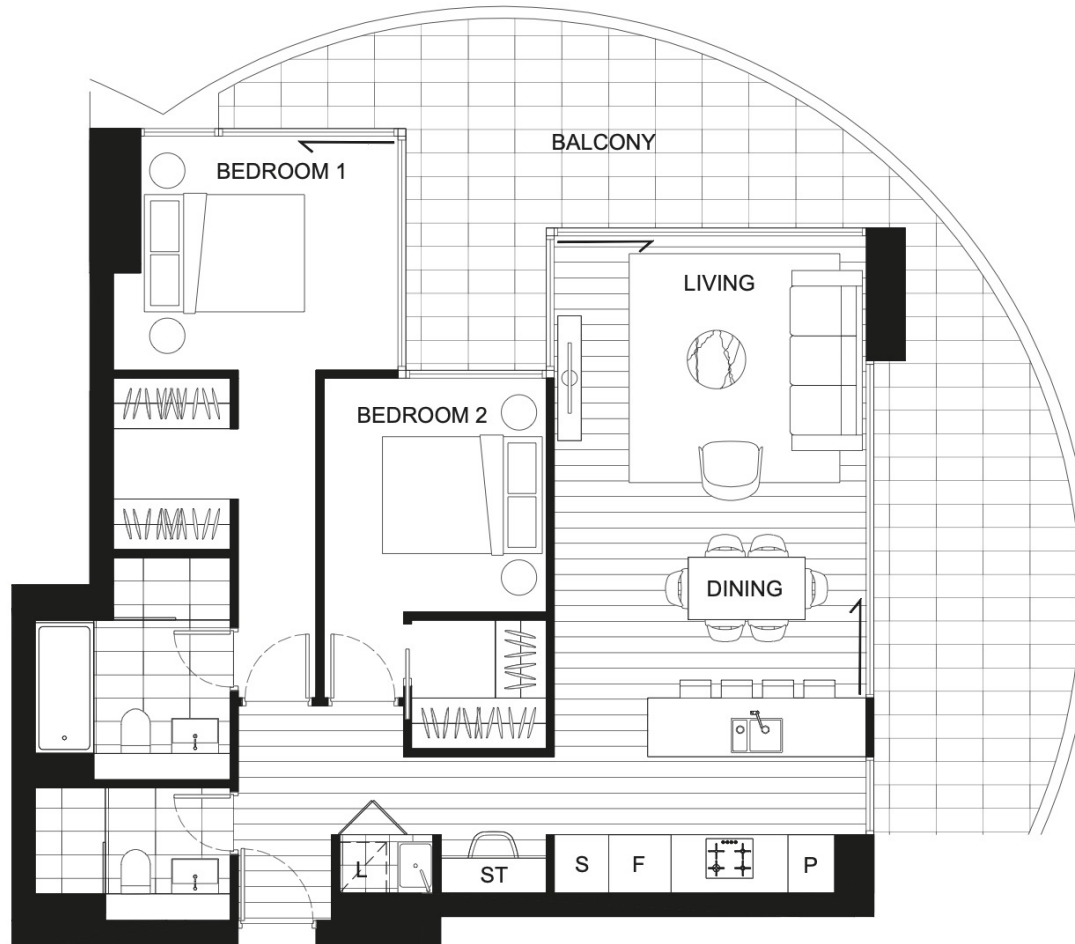
DISCLAIMER This plan and any areas shown are subject to the terms of the contract of sale and are subject to amendment and dimensional change. All dimensions are approximate, areas indicated are determined in accordance with the Land Title Act of Queensland (1994) method of measurement guidelines for measuring floor space in residential premises. Fittings, finishes, fixtures and specifications are also subject to change without notice. Images of furniture are for illustrative purposes only. Furniture is not included in the sale. Views will vary depending on the position of the lot within building. Each of the developer, builder and agent do not warrant that views will not be impacted by future development.



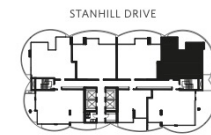


CHEVRON ONE

GOLD COAST



TYPE A (MIRRORED)



2 BEDROOM
1 STUDY

INTERNAL	92m ²
EXTERNAL	(L2) 62m ² / (L3-29) 39m ²
TOTAL	(L2) 154m ² / (L3-29) 131m ²

APARTMENTS

2.05, 3.05, 4.05, 5.05, 6.05, 7.05, 8.05, 9.05, 10.05, 11.05,
12.05, 13.05, 14.05, 15.05, 16.05, 17.05, 18.05, 19.04,
20.04, 21.04, 22.04, 23.04, 24.04, 25.04, 26.04, 27.04,
28.04, 29.04

BROUGHT TO YOU BY

Bensons

DISCLAIMER This plan and any areas shown are subject to the terms of the contract of sale and are subject to amendment and dimensional change. All dimensions are approximate, areas indicated are determined in accordance with the Land Title Act of Queensland (1994) method of measurement guidelines for measuring floor space in residential premises. Fittings, finishes, fixtures and specifications are also subject to change without notice. Images of furniture are for illustrative purposes only. Furniture is not included in the sale. Views will vary depending on the position of the lot within building. Each of the developer, builder and agent do not warrant that views will not be impacted by future development.



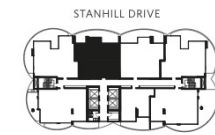


CHEVRON ONE

GOLD COAST



TYPE B



2 BEDROOM
1 STUDY

INTERNAL	92m ²
EXTERNAL	(L2) 41m ² / (L3-29) 26m ²
TOTAL	(L2) 133m ² / (L3-29) 118m ²

APARTMENTS
2.03, 3.03, 4.03, 5.03, 6.03, 7.03, 8.03,

BROUGHT TO YOU BY

Bensons

DISCLAIMER This plan and any areas shown are subject to the terms of the contract of sale and are subject to amendment and dimensional change. All dimensions are approximate, areas indicated are determined in accordance with the Land Title Act of Queensland (1994) method of measurement guidelines for measuring floor space in residential premises. Fittings, finishes, fixtures and specifications are also subject to change without notice. Images of furniture are for illustrative purposes only. Furniture is not included in the sale. Views will vary depending on the position of the lot within building. Each of the developer, builder and agent do not warrant that views will not be impacted by future development.

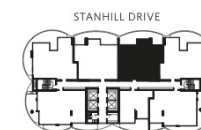




CHEVRON ONE

GOLD COAST

TYPE B (MIRRORED)



2 BEDROOM
1 STUDY

INTERNAL	92m ²
EXTERNAL	(L2) 38m ² / (L3-29) 26m ²
TOTAL	(L2) 130m ² / (L3-29) 118m ²

APARTMENTS

2.04, 3.04, 4.04, 5.04, 6.04, 7.04, 8.04, 9.04, 10.04,
11.04, 12.04, 13.04, 14.04, 15.04, 16.04, 17.04, 18.04

BROUGHT TO YOU BY

Bensons

DISCLAIMER This plan and any areas shown are subject to the terms of the contract of sale and are subject to amendment and dimensional change. All dimensions are approximate, areas indicated are determined in accordance with the Land Title Act of Queensland (1994) method of measurement guidelines for measuring floor space in residential premises. Fittings, finishes, fixtures and specifications are also subject to change without notice. Images of furniture are for illustrative purposes only. Furniture is not included in the sale. Views will vary depending on the position of the lot within building. Each of the developer, builder and agent do not warrant that views will not be impacted by future development.



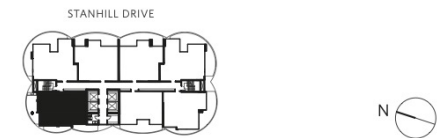


CHEVRON ONE

GOLD COAST



TYPE C



2 BEDROOM
1 STUDY

INTERNAL	93m ²
EXTERNAL	(L2) 29m ² / (L3-37) 38m ²
TOTAL	(L2) 122m ² / (L3-37) 131m ²

APARTMENTS

2.01, 3.01, 4.01, 5.01, 6.01, 7.01, 8.01, 9.01, 10.01, 11.01, 12.01, 13.01, 14.01, 15.01, 16.01, 17.01, 18.01, 19.01, 20.01, 21.01, 22.01, 23.01, 24.01, 25.01, 26.01, 27.01, 28.01, 29.01, 30.01, 31.01, 32.01, 33.01, 34.01, 35.01, 36.01, 37.01

BROUGHT TO YOU BY

Bensons

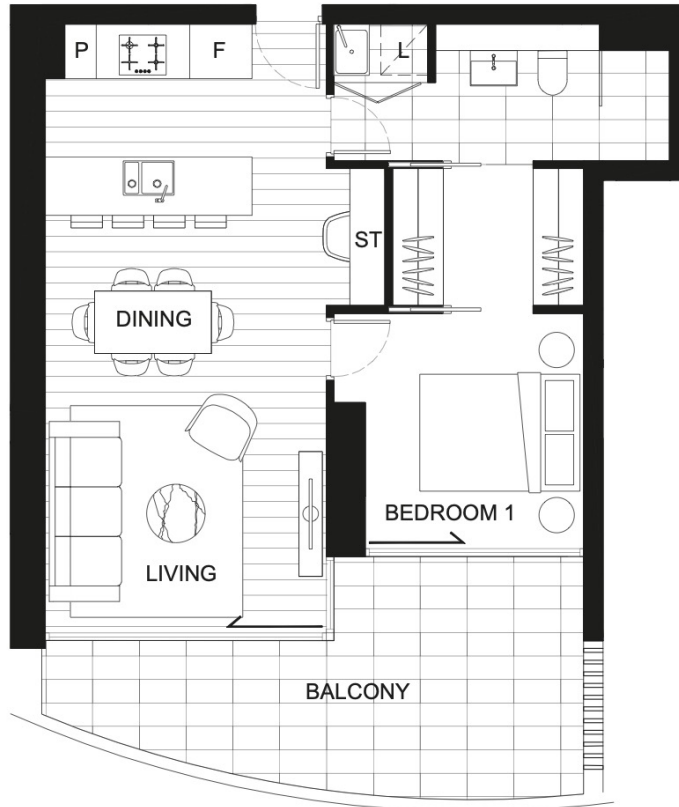
DISCLAIMER This plan and any areas shown are subject to the terms of the contract of sale and are subject to amendment and dimensional change. All dimensions are approximate, areas indicated are determined in accordance with the Land Title Act of Queensland (1994) method of measurement guidelines for measuring floor space in residential premises. Fittings, finishes, fixtures and specifications are also subject to change without notice. Images of furniture are for illustrative purposes only. Furniture is not included in the sale. Views will vary depending on the position of the lot within building. Each of the developer, builder and agent do not warrant that views will not be impacted by future development.



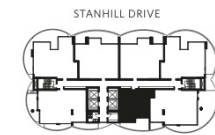


CHEVRON ONE

GOLD COAST



TYPE D



1 BEDROOM
1 STUDY

INTERNAL	60m ²
EXTERNAL	17m ²
TOTAL	77m ²

APARTMENTS

2.07, 3.07, 4.07, 5.07, 6.07, 7.07, 8.07

BROUGHT TO YOU BY

Bensons

DISCLAIMER This plan and any areas shown are subject to the terms of the contract of sale and are subject to amendment and dimensional change. All dimensions are approximate, areas indicated are determined in accordance with the Land Title Act of Queensland (1994) method of measurement guidelines for measuring floor space in residential premises. Fittings, finishes, fixtures and specifications are also subject to change without notice. Images of furniture are for illustrative purposes only. Furniture is not included in the sale. Views will vary depending on the position of the lot within building. Each of the developer, builder and agent do not warrant that views will not be impacted by future development.



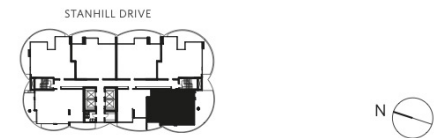


CHEVRON ONE

GOLD COAST



TYPE E



2 BEDROOM
1 STUDY

INTERNAL	95m ²
EXTERNAL	(L2) 58m ² / (L3-18) 53m ²
TOTAL	(L2) 153m ² / (L3-18) 148m ²

APARTMENTS
2.06, 3.06, 4.06, 5.06, 6.06, 7.06, 8.06

BROUGHT TO YOU BY

Bensons

DISCLAIMER This plan and any areas shown are subject to the terms of the contract of sale and are subject to amendment and dimensional change. All dimensions are approximate, areas indicated are determined in accordance with the Land Title Act of Queensland (1994) method of measurement guidelines for measuring floor space in residential premises. Fittings, finishes, fixtures and specifications are also subject to change without notice. Images of furniture are for illustrative purposes only. Furniture is not included in the sale. Views will vary depending on the position of the lot within building. Each of the developer, builder and agent do not warrant that views will not be impacted by future development.



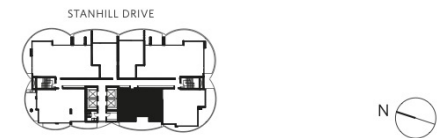


CHEVRON ONE

GOLD COAST



TYPE F



2 BEDROOM

INTERNAL	84m ²
EXTERNAL	23m ²
TOTAL	107m ²

APARTMENTS

19.06, 20.06, 21.06, 22.06, 23.06, 24.06, 25.06, 26.06, 27.06, 28.06, 29.06, 30.06, 31.06, 32.06, 33.06, 34.06, 35.06, 36.06

BROUGHT TO YOU BY

Bensons

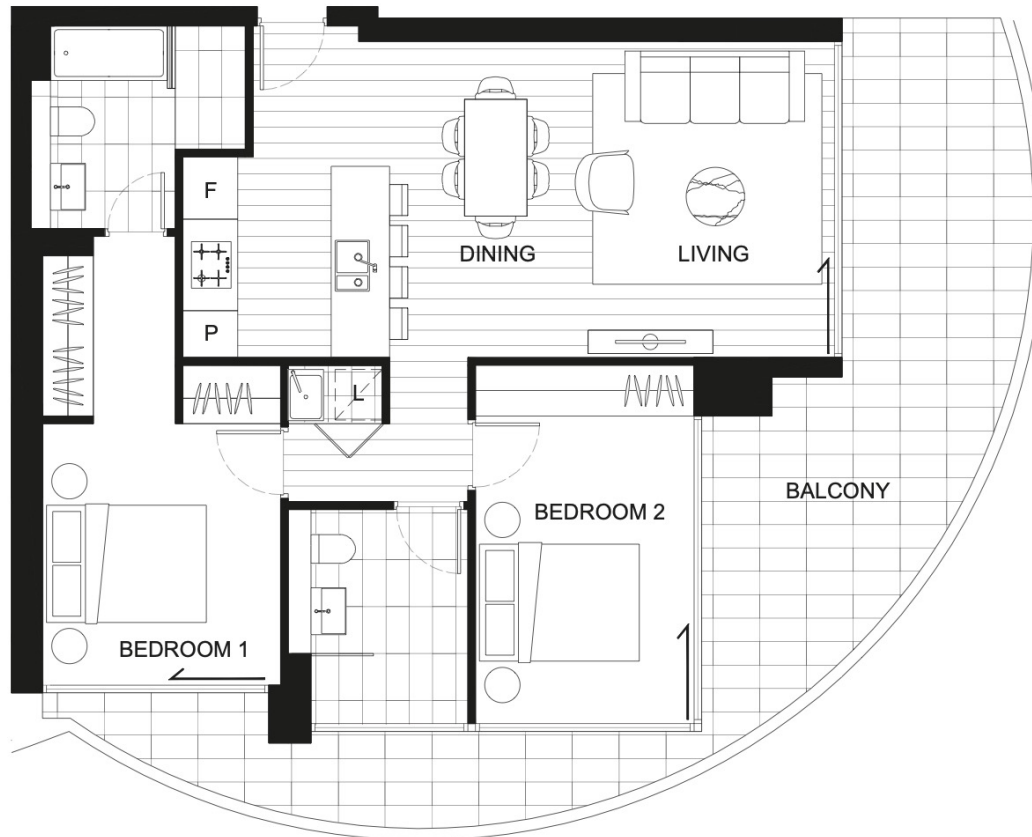
DISCLAIMER This plan and any areas shown are subject to the terms of the contract of sale and are subject to amendment and dimensional change. All dimensions are approximate, areas indicated are determined in accordance with the Land Title Act of Queensland (1994) method of measurement guidelines for measuring floor space in residential premises. Fittings, finishes, fixtures and specifications are also subject to change without notice. Images of furniture are for illustrative purposes only. Furniture is not included in the sale. Views will vary depending on the position of the lot within building. Each of the developer, builder and agent do not warrant that views will not be impacted by future development.



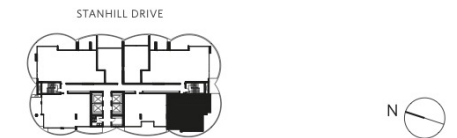


CHEVRON ONE

GOLD COAST



TYPE G



2 BEDROOM

INTERNAL	84m ²
EXTERNAL	33m ²
TOTAL	117m ²

APARTMENTS

19.05, 20.05, 21.05, 22.05, 23.05, 24.05, 25.05, 26.05, 27.05, 28.05, 29.05, 30.05, 31.05, 32.05, 33.05, 34.05, 35.05, 36.05

BROUGHT TO YOU BY

Bensons

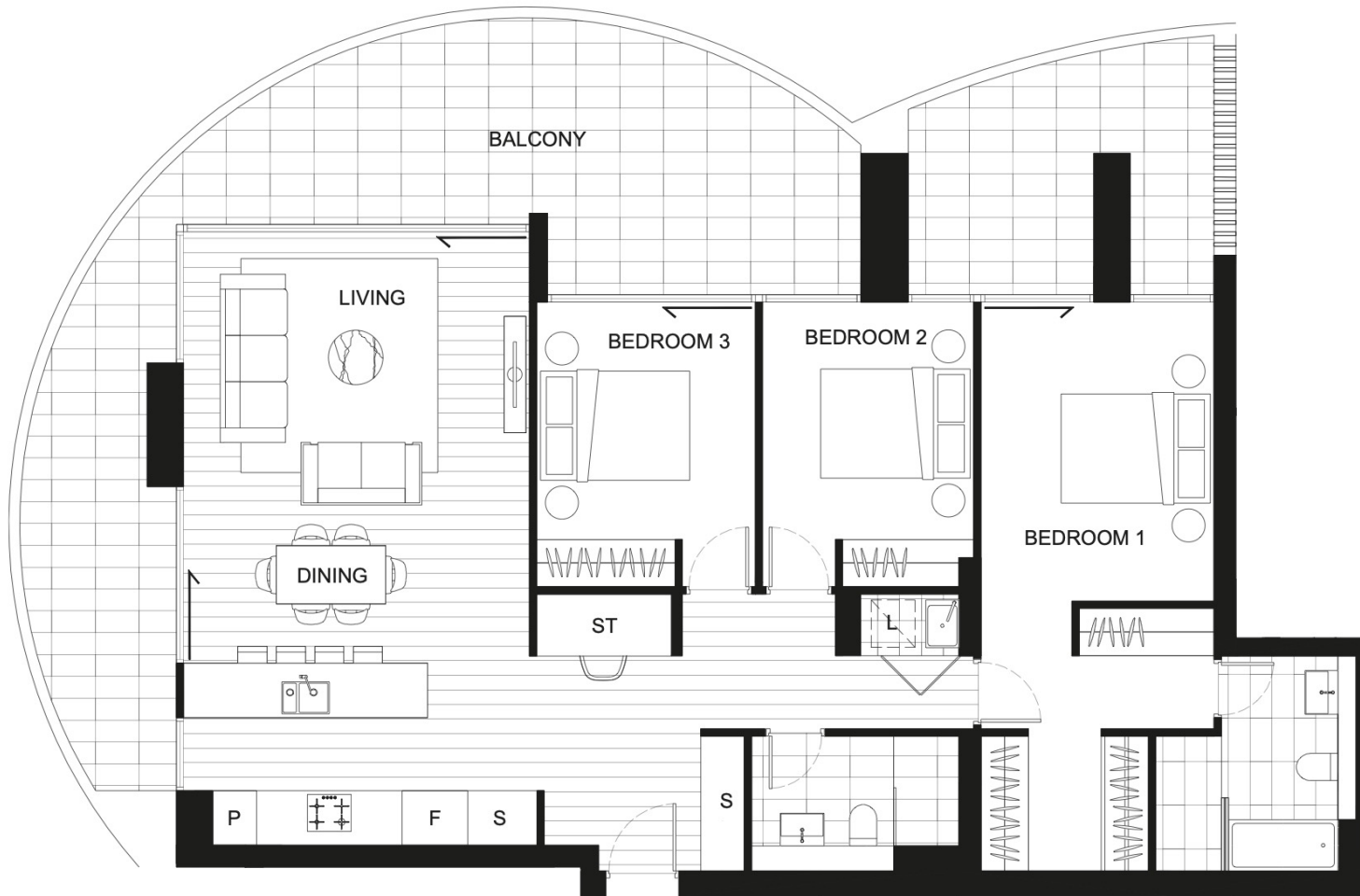
DISCLAIMER This plan and any areas shown are subject to the terms of the contract of sale and are subject to amendment and dimensional change. All dimensions are approximate, areas indicated are determined in accordance with the Land Title Act of Queensland (1994) method of measurement guidelines for measuring floor space in residential premises. Fittings, finishes, fixtures and specifications are also subject to change without notice. Images of furniture are for illustrative purposes only. Furniture is not included in the sale. Views will vary depending on the position of the lot within building. Each of the developer, builder and agent do not warrant that views will not be impacted by future development.



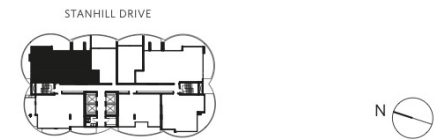


CHEVRON ONE

GOLD COAST



TYPE H



3 BEDROOM
1 STUDY

INTERNAL	125m ²
EXTERNAL	57m ²
TOTAL	182m ²

APARTMENTS
30.02, 31.02, 32.02, 33.02, 34.02, 35.02, 36.02

BROUGHT TO YOU BY

Bensons

DISCLAIMER This plan and any areas shown are subject to the terms of the contract of sale and are subject to amendment and dimensional change. All dimensions are approximate, areas indicated are determined in accordance with the Land Title Act of Queensland (1994) method of measurement guidelines for measuring floor space in residential premises. Fittings, finishes, fixtures and specifications are also subject to change without notice. Images of furniture are for illustrative purposes only. Furniture is not included in the sale. Views will vary depending on the position of the lot within building. Each of the developer, builder and agent do not warrant that views will not be impacted by future development.





CHEVRON ONE

GOLD COAST



TYPE H (MIRRORED)



3 BEDROOM
1 STUDY

INTERNAL	125m ²
EXTERNAL	60m ²
TOTAL	185m ²

APARTMENTS
30.04, 31.04, 32.04, 33.04, 34.04, 35.04, 36.04

BROUGHT TO YOU BY

Bensons

DISCLAIMER This plan and any areas shown are subject to the terms of the contract of sale and are subject to amendment and dimensional change. All dimensions are approximate, areas indicated are determined in accordance with the Land Title Act of Queensland (1994) method of measurement guidelines for measuring floor space in residential premises. Fittings, finishes, fixtures and specifications are also subject to change without notice. Images of furniture are for illustrative purposes only. Furniture is not included in the sale. Views will vary depending on the position of the lot within building. Each of the developer, builder and agent do not warrant that views will not be impacted by future development.



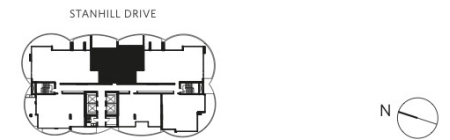


CHEVRON ONE

GOLD COAST



TYPE I



2 BEDROOM
1 STUDY

INTERNAL	105m ²
EXTERNAL	25m ²
TOTAL	130m ²

APARTMENTS
30.03, 31.03, 32.03, 33.03, 34.03, 35.03, 36.03

BROUGHT TO YOU BY

Bensons

DISCLAIMER This plan and any areas shown are subject to the terms of the contract of sale and are subject to amendment and dimensional change. All dimensions are approximate, areas indicated are determined in accordance with the Land Title Act of Queensland (1994) method of measurement guidelines for measuring floor space in residential premises. Fittings, finishes, fixtures and specifications are also subject to change without notice. Images of furniture are for illustrative purposes only. Furniture is not included in the sale. Views will vary depending on the position of the lot within building. Each of the developer, builder and agent do not warrant that views will not be impacted by future development.



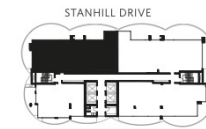


CHEVRON ONE

GOLD COAST



TYPE J



3 BEDROOM
1 STUDY

INTERNAL	171m ²
EXTERNAL	78m ²
TOTAL	249m ²

APARTMENTS
3702

BROUGHT TO YOU BY

Bensons

DISCLAIMER This plan and any areas shown are subject to the terms of the contract of sale and are subject to amendment and dimensional change. All dimensions are approximate, areas indicated are determined in accordance with the Land Title Act of Queensland (1994) method of measurement guidelines for measuring floor space in residential premises. Fittings, finishes, fixtures and specifications are also subject to change without notice. Images of furniture are for illustrative purposes only. Furniture is not included in the sale. Views will vary depending on the position of the lot within building. Each of the developer, builder and agent do not warrant that views will not be impacted by future development.

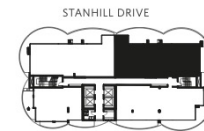




CHEVRON ONE

GOLD COAST

TYPE J (MIRRORED)



3 BEDROOM
1 STUDY

INTERNAL	171m ²
EXTERNAL	80m ²
TOTAL	251m ²

APARTMENTS
37.03, 38.03

BROUGHT TO YOU BY

Bensons

DISCLAIMER This plan and any areas shown are subject to the terms of the contract of sale and are subject to amendment and dimensional change. All dimensions are approximate, areas indicated are determined in accordance with the Land Title Act of Queensland (1994) method of measurement guidelines for measuring floor space in residential premises. Fittings, finishes, fixtures and specifications are also subject to change without notice. Images of furniture are for illustrative purposes only. Furniture is not included in the sale. Views will vary depending on the position of the lot within building. Each of the developer, builder and agent do not warrant that views will not be impacted by future development.



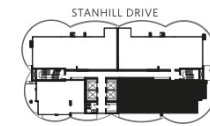


CHEVRON ONE

GOLD COAST



TYPE K



3 BEDROOM
1 STUDY

INTERNAL	164m ²
EXTERNAL	61m ²
TOTAL	225m ²

APARTMENTS
37.04, 38.04

BROUGHT TO YOU BY

Bensons

DISCLAIMER This plan and any areas shown are subject to the terms of the contract of sale and are subject to amendment and dimensional change. All dimensions are approximate, areas indicated are determined in accordance with the Land Title Act of Queensland (1994) method of measurement guidelines for measuring floor space in residential premises. Fittings, finishes, fixtures and specifications are also subject to change without notice. Images of furniture are for illustrative purposes only. Furniture is not included in the sale. Views will vary depending on the position of the lot within building. Each of the developer, builder and agent do not warrant that views will not be impacted by future development.



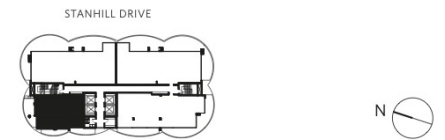


CHEVRON ONE

GOLD COAST



TYPE L



2 BEDROOM

INTERNAL	95m ²
EXTERNAL	38m ²
TOTAL	133m ²

APARTMENTS
38.01

BROUGHT TO YOU BY

Bensons

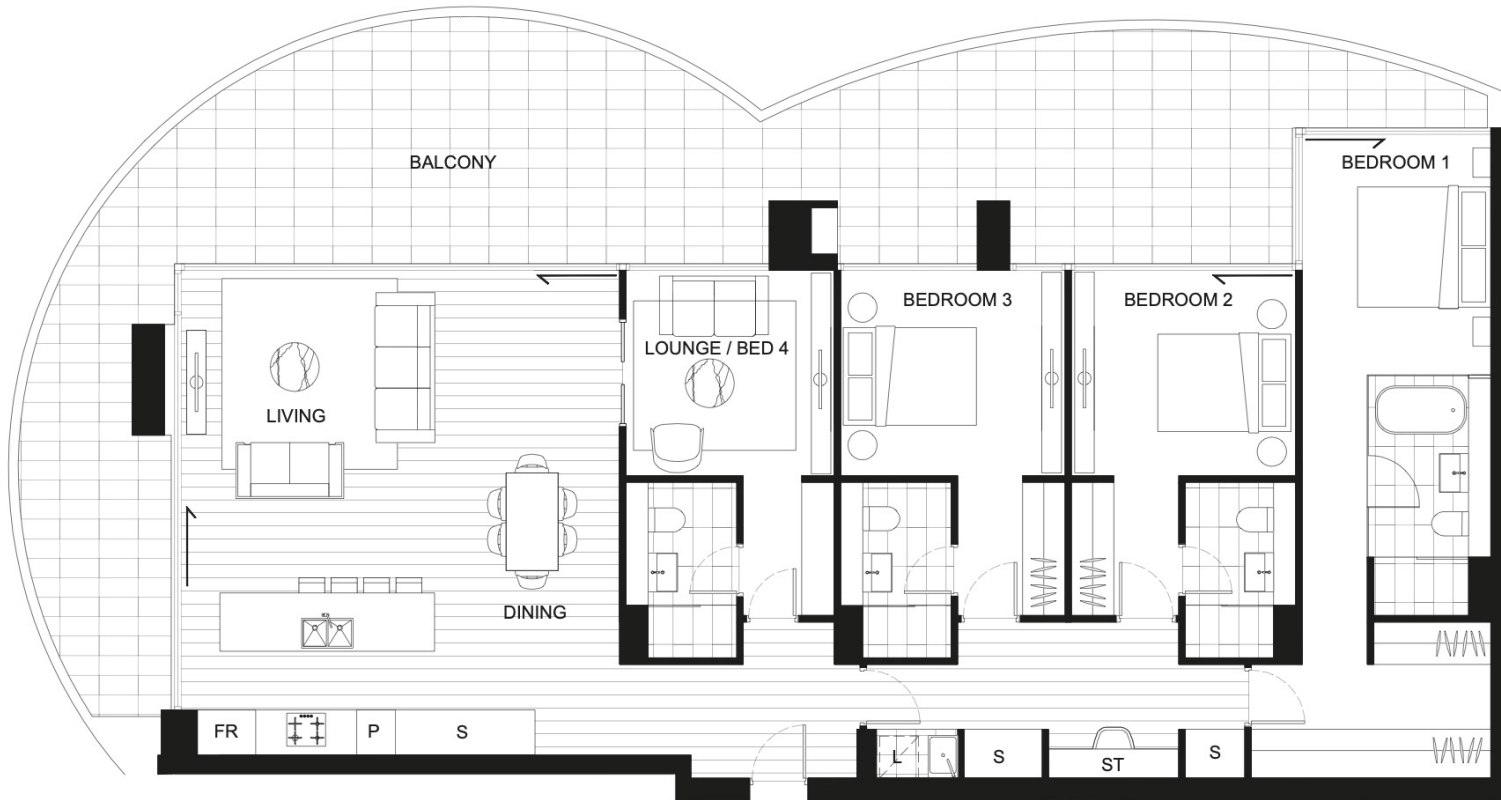
DISCLAIMER This plan and any areas shown are subject to the terms of the contract of sale and are subject to amendment and dimensional change. All dimensions are approximate, areas indicated are determined in accordance with the Land Title Act of Queensland (1994) method of measurement guidelines for measuring floor space in residential premises. Fittings, finishes, fixtures and specifications are also subject to change without notice. Images of furniture are for illustrative purposes only. Furniture is not included in the sale. Views will vary depending on the position of the lot within building. Each of the developer, builder and agent do not warrant that views will not be impacted by future development.



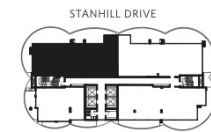


CHEVRON ONE

GOLD COAST



TYPE M



3 BEDROOM
1 STUDY

INTERNAL	170m ²
EXTERNAL	78m ²
TOTAL	248m ²

APARTMENTS
38.02

BROUGHT TO YOU BY

Bensons

DISCLAIMER This plan and any areas shown are subject to the terms of the contract of sale and are subject to amendment and dimensional change. All dimensions are approximate, areas indicated are determined in accordance with the Land Title Act of Queensland (1994) method of measurement guidelines for measuring floor space in residential premises. Fittings, finishes, fixtures and specifications are also subject to change without notice. Images of furniture are for illustrative purposes only. Furniture is not included in the sale. Views will vary depending on the position of the lot within building. Each of the developer, builder and agent do not warrant that views will not be impacted by future development.





CHEVRON ONE

GOLD COAST

TYPE N



3 BEDROOM

INTERNAL	117m ²
EXTERNAL	46m ²
TOTAL	163m ²

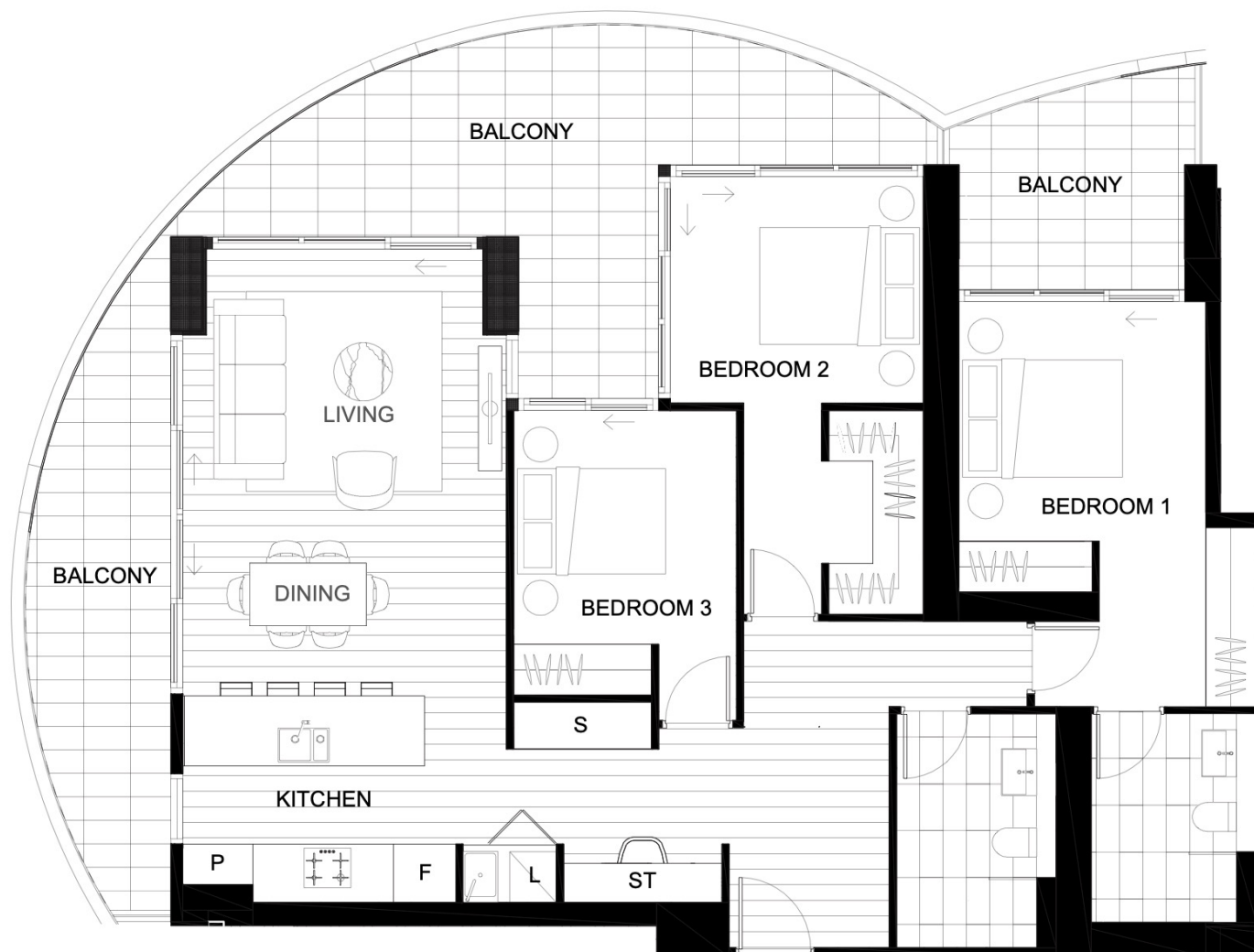
APARTMENTS

9.02, 10.02, 11.02, 12.02, 13.02, 14.02, 15.02, 16.02, 17.02, 18.02

BROUGHT TO YOU BY

Bensons

DISCLAIMER This plan and any areas shown are subject to the terms of the contract of sale and are subject to amendment and dimensional change. All dimensions are approximate, areas indicated are determined in accordance with the Land Title Act of Queensland (1994) method of measurement guidelines for measuring floor space in residential premises. Fittings, finishes, fixtures and specifications are also subject to change without notice. Images of furniture are for illustrative purposes only. Furniture is not included in the sale. Views will vary depending on the position of the lot within building. Each of the developer, builder and agent do not warrant that views will not be impacted by future development.





CHEVRON ONE

GOLD COAST

TYPE O

STANHILL DRIVE



1 BEDROOM

INTERNAL	67m ²
EXTERNAL	17m ²
TOTAL	84m ²

APARTMENTS

9.03, 10.03, 11.03, 12.03, 13.03, 14.03, 15.03, 16.03, 17.03, 18.03

BROUGHT TO YOU BY

Bensons

DISCLAIMER This plan and any areas shown are subject to the terms of the contract of sale and are subject to amendment and dimensional change. All dimensions are approximate, areas indicated are determined in accordance with the Land Title Act of Queensland (1994) method of measurement guidelines for measuring floor space in residential premises. Fittings, finishes, fixtures and specifications are also subject to change without notice. Images of furniture are for illustrative purposes only. Furniture is not included in the sale. Views will vary depending on the position of the lot within building. Each of the developer, builder and agent do not warrant that views will not be impacted by future development.



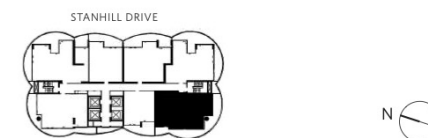


CHEVRON ONE

GOLD COAST



TYPE P



3 BEDROOM

INTERNAL	108m ²
EXTERNAL	43m ²
TOTAL	151m ²

APARTMENTS
9.06, 10.06, 11.06, 12.06, 13.06, 14.06, 15.06, 16.06, 17.06,
18.06

BROUGHT TO YOU BY

Bensons

DISCLAIMER This plan and any areas shown are subject to the terms of the contract of sale and are subject to amendment and dimensional change. All dimensions are approximate, areas indicated are determined in accordance with the Land Title Act of Queensland (1994) method of measurement guidelines for measuring floor space in residential premises. Fittings, finishes, fixtures and specifications are also subject to change without notice. Images of furniture are for illustrative purposes only. Furniture is not included in the sale. Views will vary depending on the position of the lot within building. Each of the developer, builder and agent do not warrant that views will not be impacted by future development.



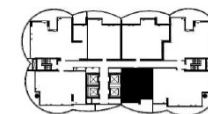


CHEVRON ONE

GOLD COAST

TYPE Q

STANHILL DRIVE



1 BEDROOM

INTERNAL	57m ²
EXTERNAL	17m ²
TOTAL	74m ²

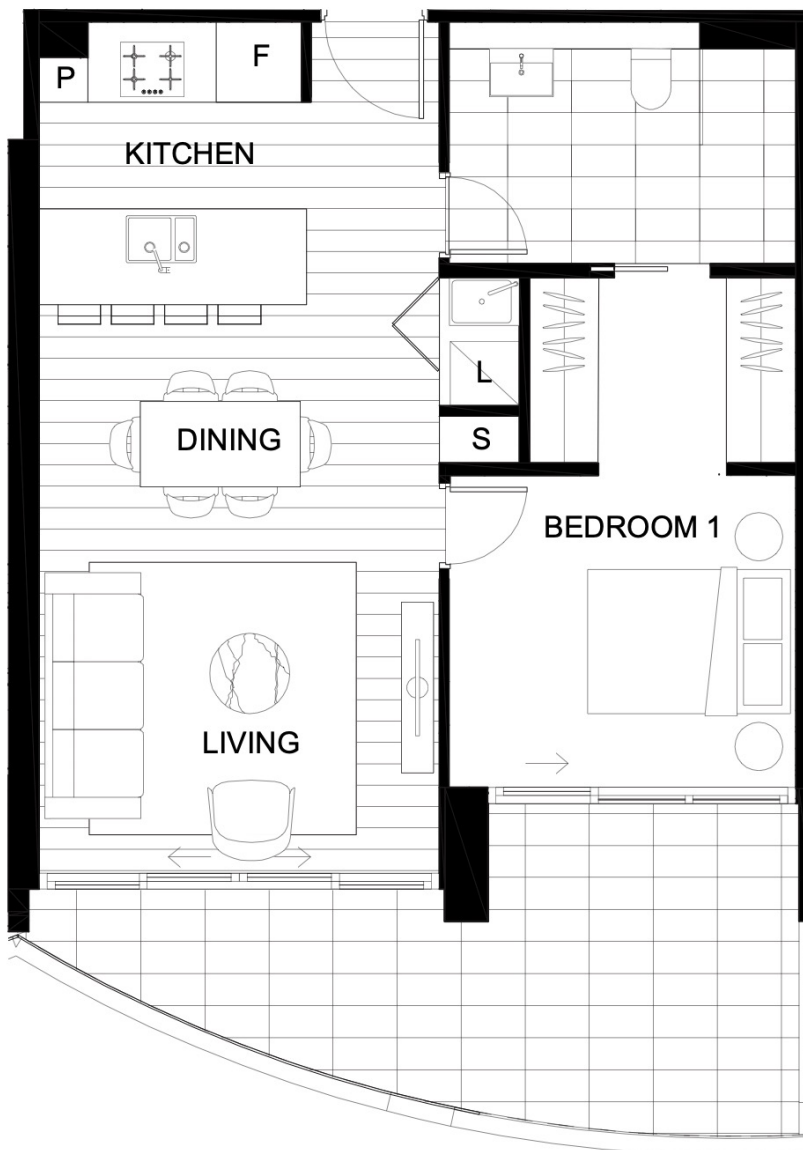
APARTMENTS

9.07, 10.07, 11.07, 12.07, 13.07, 14.07, 15.07, 16.07, 17.07, 18.07

BROUGHT TO YOU BY

Bensons

DISCLAIMER This plan and any areas shown are subject to the terms of the contract of sale and are subject to amendment and dimensional change. All dimensions are approximate, areas indicated are determined in accordance with the Land Title Act of Queensland (1994) method of measurement guidelines for measuring floor space in residential premises. Fittings, finishes, fixtures and specifications are also subject to change without notice. Images of furniture are for illustrative purposes only. Furniture is not included in the sale. Views will vary depending on the position of the lot within building. Each of the developer, builder and agent do not warrant that views will not be impacted by future development.





CHEVRON ONE

GOLD COAST



TYPE R



3 BEDROOM
1 STUDY

INTERNAL	184m ²
EXTERNAL	52m ²
TOTAL	236m ²

APARTMENTS
19.03, 20.03, 21.03, 22.03, 23.03, 24.03, 25.03, 26.03,
27.03, 28.03, 29.03

BROUGHT TO YOU BY

Bensons

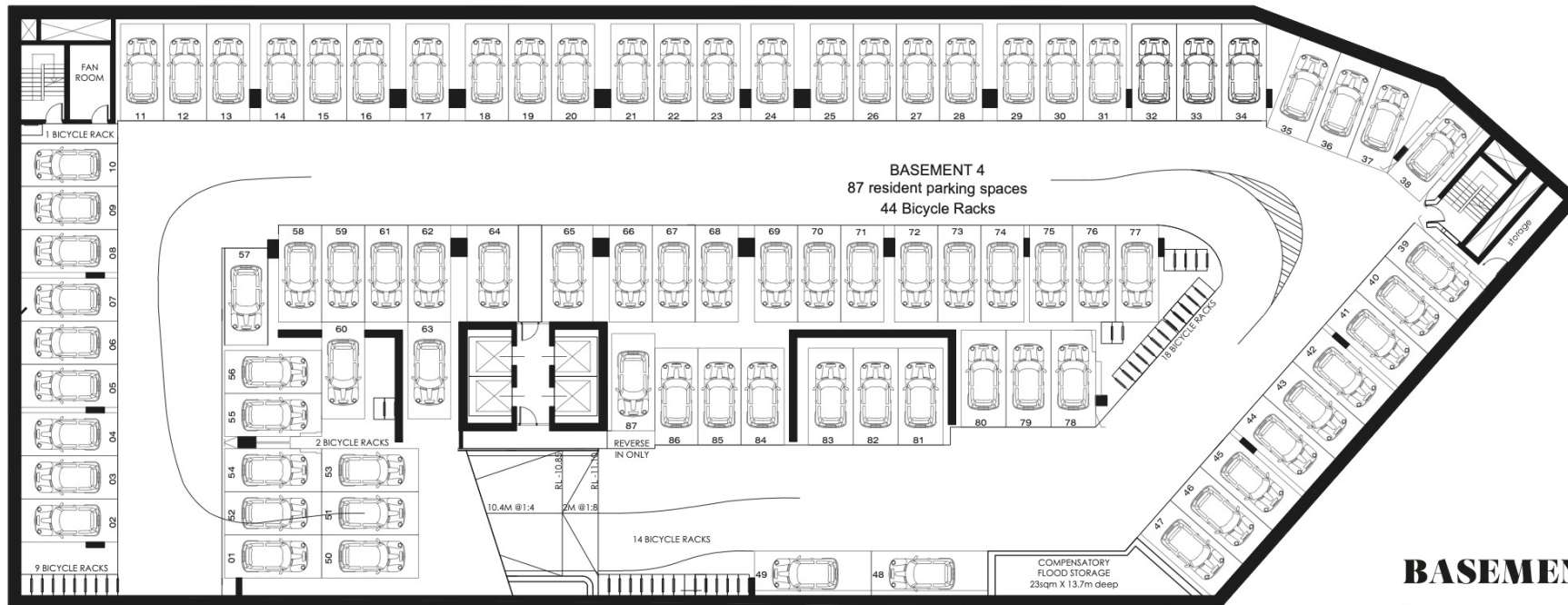
DISCLAIMER This plan and any areas shown are subject to the terms of the contract of sale and are subject to amendment and dimensional change. All dimensions are approximate, areas indicated are determined in accordance with the Land Title Act of Queensland (1994) method of measurement guidelines for measuring floor space in residential premises. Fittings, finishes, fixtures and specifications are also subject to change without notice. Images of furniture are for illustrative purposes only. Furniture is not included in the sale. Views will vary depending on the position of the lot within building. Each of the developer, builder and agent do not warrant that views will not be impacted by future development.





CHEVRON ONE

GOLD COAST



BASEMENT LEVEL 4

BROUGHT TO YOU BY

Bensons

DISCLAIMER This plan and any areas shown are subject to the terms of the contract of sale and are subject to amendment and dimensional change. All dimensions are approximate, areas indicated are determined in accordance with the Land Title Act of Queensland (1994) method of measurement guidelines for measuring floor space in residential premises. Fittings, finishes, fixtures and specifications are also subject to change without notice. Images of furniture are for illustrative purposes only. Furniture is not included in the sale. Views will vary depending on the position of the lot within building. Each of the developer, builder and agent do not warrant that views will not be impacted by future development.

